

OBJEKTOVÉ KOBERCE

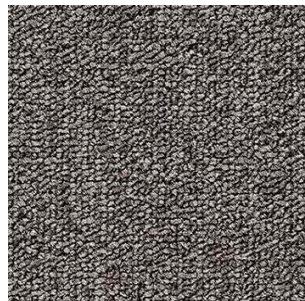
MAGNUM 33



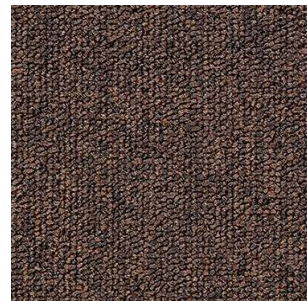
65061 50 x 50 cm



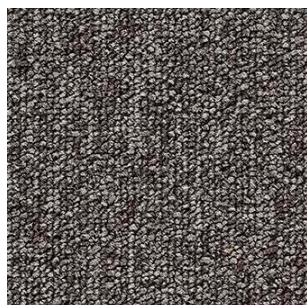
65140 50 x 50 cm



65817 50 x 50 cm



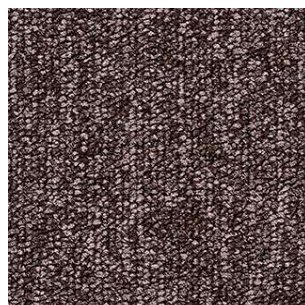
65804 50 x 50 cm



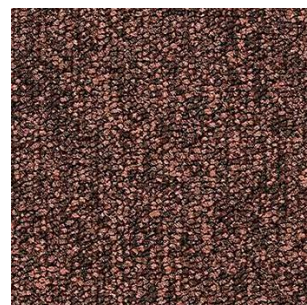
65810 50 x 50 cm



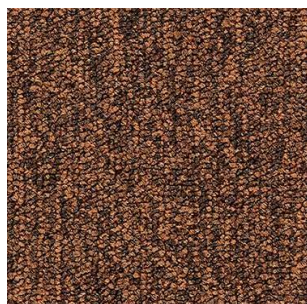
65989 50 x 50 cm



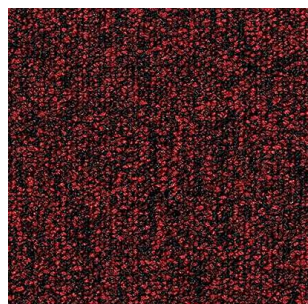
65820 50 x 50 cm



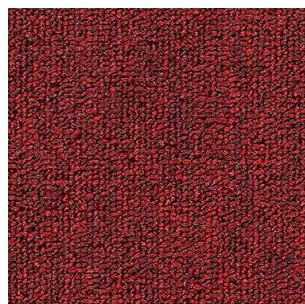
65149 50 x 50 cm



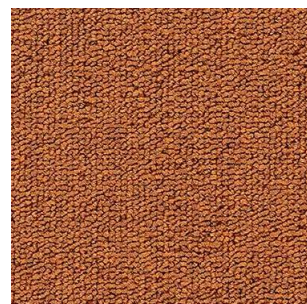
65283 50 x 50 cm



65353 50 x 50 cm



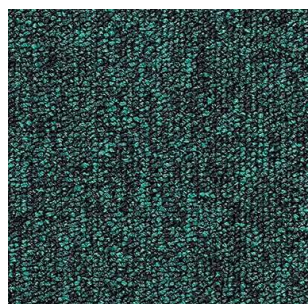
65329 50 x 50 cm



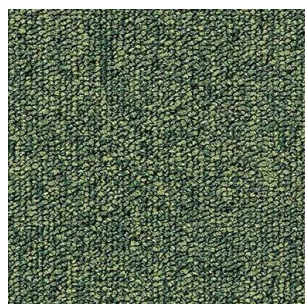
65322 50 x 50 cm



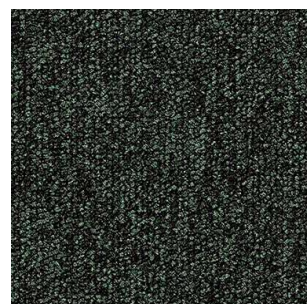
65543 50 x 50 cm



65608 50 x 50 cm



65625 50 x 50 cm

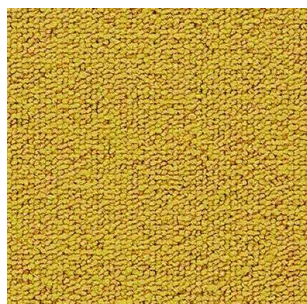


65668 50 x 50 cm

BUSINESS PRO

OBJEKTOVÉ KOBERCE

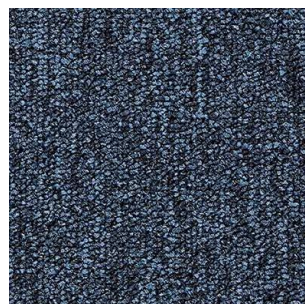
MAGNUM 33



65210 50 x 50 cm



65504 50 x 50 cm



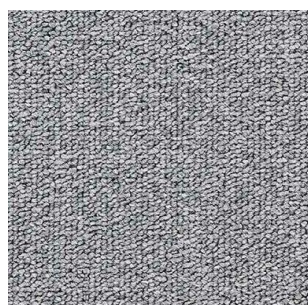
65573 50 x 50 cm



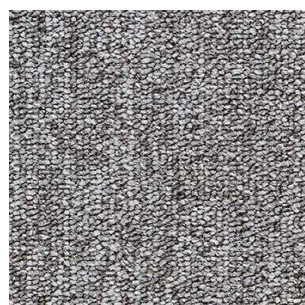
65553 50 x 50 cm



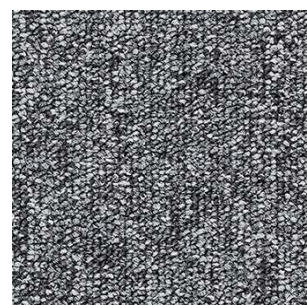
65826 50 x 50 cm



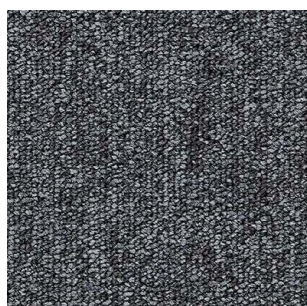
65957 50 x 50 cm



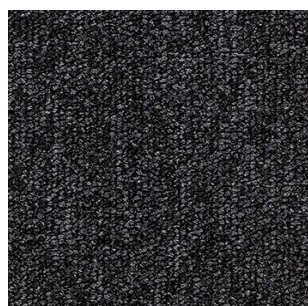
65983 50 x 50 cm



65907 50 x 50 cm



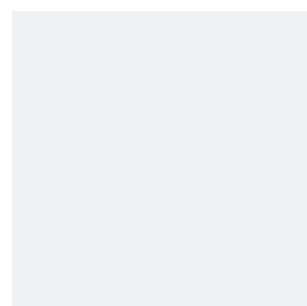
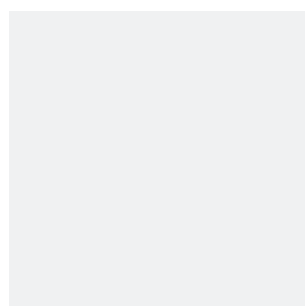
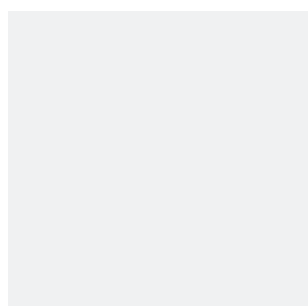
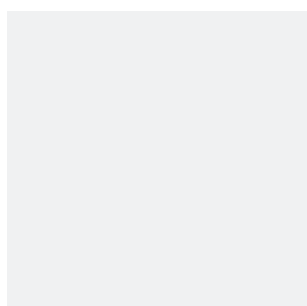
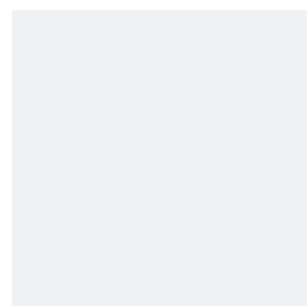
65961 50 x 50 cm



65990 50 x 50 cm



65995 50 x 50 cm



BUSINESS PRO

OBJEKTOVÉ KOBERCE

MAGNUM 33

textilní podlahová krytina s všívaným smyčkovým vlasem
na bitumenovém podkladu



Třída zátěže
33
EN 1307



Výška celkem
6,2 mm
ISO 1765

Výška vlasu
2,9 mm
ISO 1766

Rozměr
0,5 x 0,5 m
EN 994

Váha celkem
4300 g/m²
ISO 8543

Váha vlasu
540 g/m²
ISO 2424

Vhodné pro kolečkové židle
tvrdá kolečka typ H
EN 985

Stálobarevnost
≥ 7
EN ISO 105-B02

Voděodolnost
≥ 4
EN ISO 105-E01



Materiál vlákna
100% PA6
ISO 2424

Hustota všívání
ca 180 000 vpichů/m²
ISO 1763

Stupeň komfortu
LC 1
EN 1307

Skluznost povrchu
DS
EN 14041

Klasifikace hořlavosti
B_{f1}-s1 (při celoplošném přilepení)
EN 13501-1

Vhodné pro podlahové vytápění
R = 0,062 m² K/W
ISO 8302

Rozměrová stálost
0,20 %
EN 986

Vnitřní napětí
< 2 kV
ISO 6356

Útlum kročejového hluku
26 dB
ISO 140-8

Doporučena metoda instalace
Celoplošná fixace



Dovozce KARSIS s.r.o.