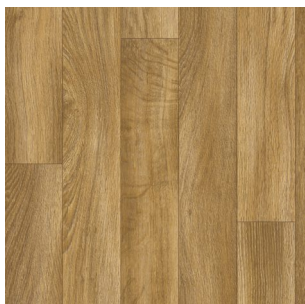


VINYLOVÉ ROLE

MASTER X 43



2951 2 / 3 / 4 m



2952 2 / 3 / 4 m



2953 2 / 3 / 4 m



2954 2 / 3 / 4 m



2955 2 / 3 / 4 m



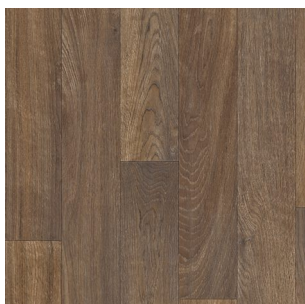
2956 2 / 4 m



2958 2 / 3 / 4 m



2960 2 / 4 m



2961 2 / 3 / 4 m



2962 2 / 4 m



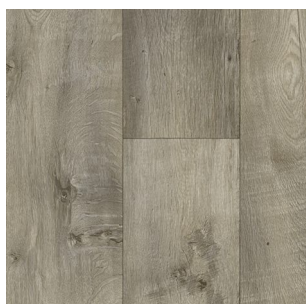
2963 2 / 3 / 4 m



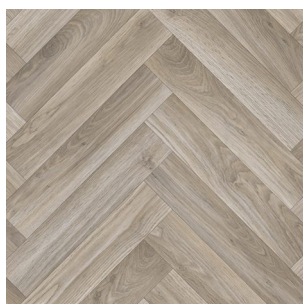
2964 2 / 3 / 4 m



2965 2 / 4 m



2966 2 / 4 m



2969 2 / 3 / 4 m

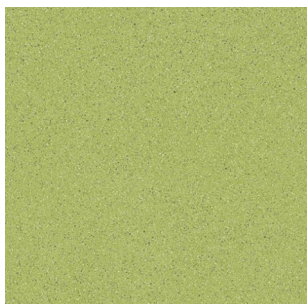


2971 2 / 4 m

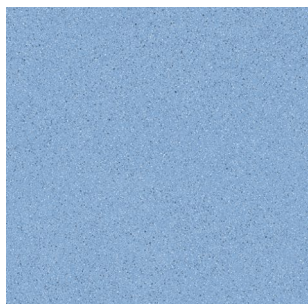
LONG LIFE PRO

VINYLOVÉ ROLE

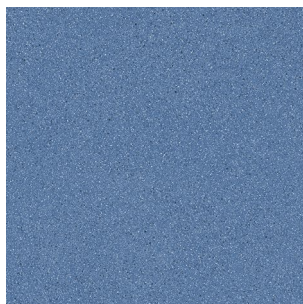
MASTER X 43



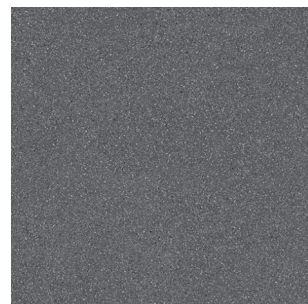
2973 2 / 4 m



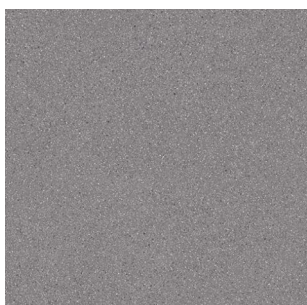
2975 2 / 3 / 4 m



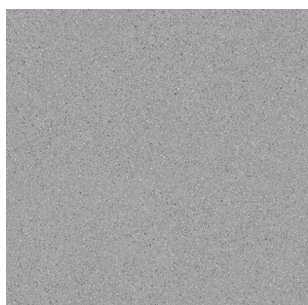
2976 2 / 3 / 4 m



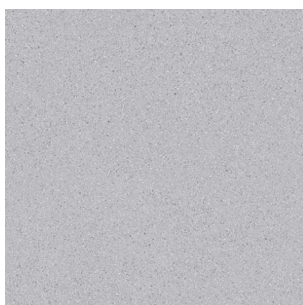
2978 2 / 3 / 4 m



2979 2 / 3 / 4 m



2980 2 / 3 / 4 m



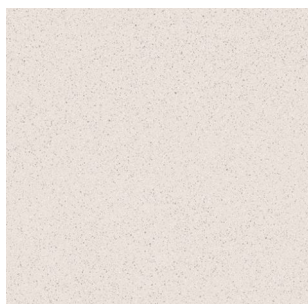
2981 2 / 3 / 4 m



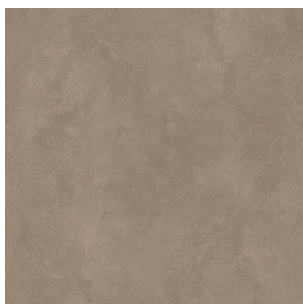
2982 2 / 3 / 4



2983 2 / 3 / 4 m



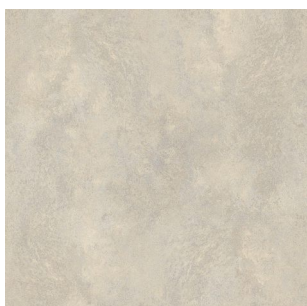
2984 2 / 3 / 4 m



2885 2 / 4 m



2886 2 / 4 m



2887 2 / 4 m



2889 2 / 4 m



2890 2 / 4 m

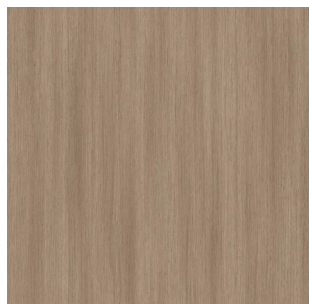


2891 2 / 4 m

LONG LIFE PRO

VINYLOVÉ ROLE

MASTER X 43



2892

2 / 4 m



2893

2 / 4 m



2999

2 / 4 m

LONG LIFE PRO

VINYLOVÉ ROLE

MASTER X 43

vinylová podlahová krytina vyztužená skelným vláknem



Užitná třída
34
ISO 10874



Užitná třída
43
ISO 10874



Ploušťka celkem
2,00 mm
EN ISO 24346



Ploušťka nášlapné vrstvy
0,70 mm
EN ISO 24340



Šíře role
2 / 3 / 4 m
EN ISO 24341



Váha celkem
2800 g/m²
EN ISO 23997



Vhodné pro kolečkové židle
tvrdá kolečka typ H
EN ISO 4918



Stálobarevnost
≥ 6
EN ISO 105-B02



Zbytkový otlak
≤ 0,10 mm
EN ISO 24343-1



Rozměrová stabilita
≤ 0,40 %
EN ISO 23999



Povrchová úprava PUR



Útlum hluku
6 dB
EN ISO 717/2



Vnitřní napětí
< 2 kV
EN 1815



Odolnost proti chemikáliím
Vysoká odolnost
ISO 26987



Vhodné pro podlahové vytápění
R = 0,014 m² K/W
ISO 8302



Klasifikace hořlavosti
B_{f1}-s1
EN 13501-1



Skuznost povrchu
DS
EN 13893

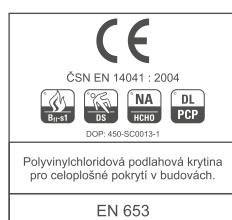


R10
DIN 51130

Doporučená metoda instalace
celoplošné lepení



Směr pokládky pásů



Dovozce KARSIS s.r.o.