

VINYLOVÉ ROLE

# MASTER X 43



2951 2 / 3 / 4 m



2952 2 / 3 / 4 m



2953 2 / 3 / 4 m



2954 2 / 3 / 4 m



2955 2 / 3 / 4 m



2956 2 / 4 m



2958 2 / 3 / 4 m



2960 2 / 4 m



2961 2 / 3 / 4 m



2962 2 / 4 m



2963 2 / 3 / 4 m



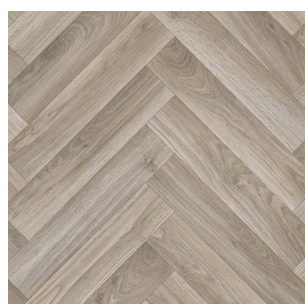
2964 2 / 3 / 4 m



2965 2 / 4 m



2966 2 / 4 m



2969 2 / 3 / 4 m



2971 2 / 4 m

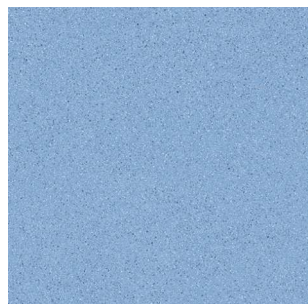
# X-PRO

VINYLOVÉ ROLE

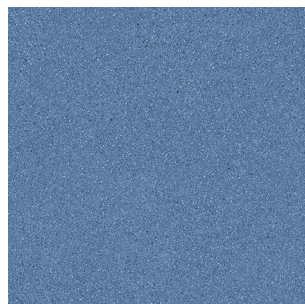
# MASTER X 43



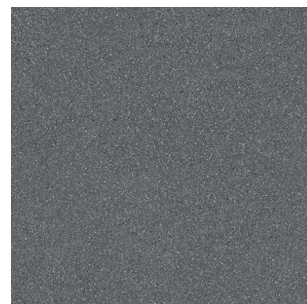
2973 2 / 4 m



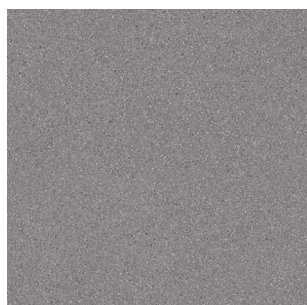
2975 2 / 3 / 4 m



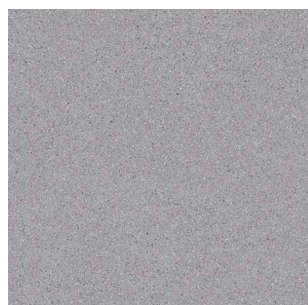
2976 2 / 3 / 4 m



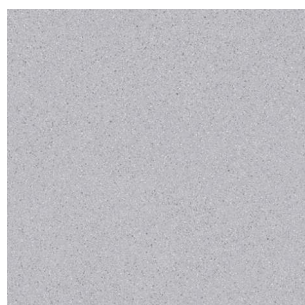
2978 2 / 3 / 4 m



2979 2 / 3 / 4 m



2980 2 / 3 / 4 m



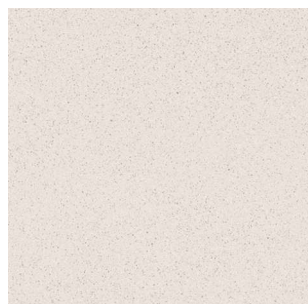
2981 2 / 3 / 4 m



2982 2 / 3 / 4



2983 2 / 3 / 4 m



2984 2 / 3 / 4 m



2885 2 / 4 m



2886 2 / 4 m



2887 2 / 4 m



2889 2 / 4 m



2890 2 / 4 m



2891 2 / 4 m

# X-PRO

VINYLOVÉ ROLE

# MASTER X 43



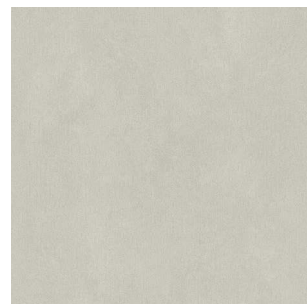
2892 2 / 4 m



2893 2 / 4 m



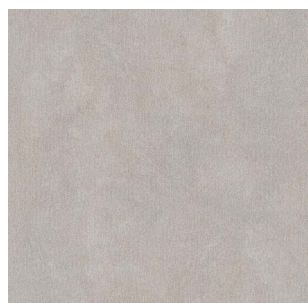
2999 2 / 4 m



2871 2 / 4 m



2872 2 / 4 m



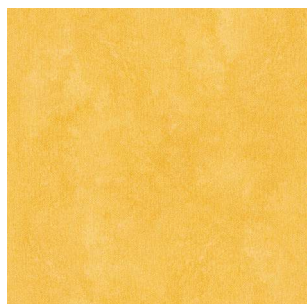
2873 2 / 4 m



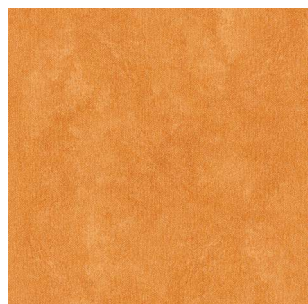
2874 2 / 4 m



2875 2 / 4 m



2876 2 / 4 m



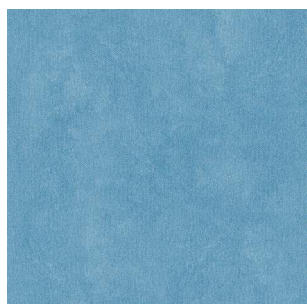
2877 2 / 4 m



2878 2 / 4 m



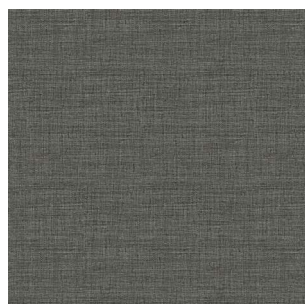
2879 2 / 4 m



2880 2 / 4 m



2881 2 / 4 m



2882 2 / 4 m

# X-PRO

# VINYLOVÉ ROLE

## MASTER X 43

vinylová podlahová krytina vyztužená skelným vláknem



Užitná třída  
**34**  
ISO 10874



Užitná třída  
**43**  
ISO 10874



Thoušťka celkem  
**2,00 mm**  
EN ISO 24346



Thoušťka nášlapné vrstvy  
**0,70 mm**  
EN ISO 24340



Šíře role  
**2 / 3 / 4 m**  
EN ISO 24341



Váha celkem  
**2800 g/m<sup>2</sup>**  
EN ISO 23997



Vhodné pro kolečkové židle  
**tvrdá kolečka typ H**  
EN ISO 4918



Stálobarevnost  
**≥ 6**  
EN ISO 105-B02



Zbytkový otlak  
**≤ 0,10 mm**  
EN ISO 24343-1



Rozměrová stabilita  
**≤ 0,40 %**  
EN ISO 23999



Povrchová úprava PUR



Útlum hluku  
**6 dB**  
EN ISO 717/2



Vnitřní napětí  
**< 2 kV**  
EN 1815



Odolnost proti chemikáliím  
**Vysoká odolnost**  
ISO 26987



Vhodné pro podlahové vytápění  
**R = 0,014 m<sup>2</sup> K/W**  
ISO 8302



Klasifikace hořlavosti  
**B<sub>f1</sub>-s1**  
EN 13501-1



Skluznost povrchu  
**DS**  
EN 13893



**R10**  
DIN 51130

Doporučená metoda instalace  
**celoplošné lepení**



Směr pokládky pásů



Dovozce KARSIS s.r.o.